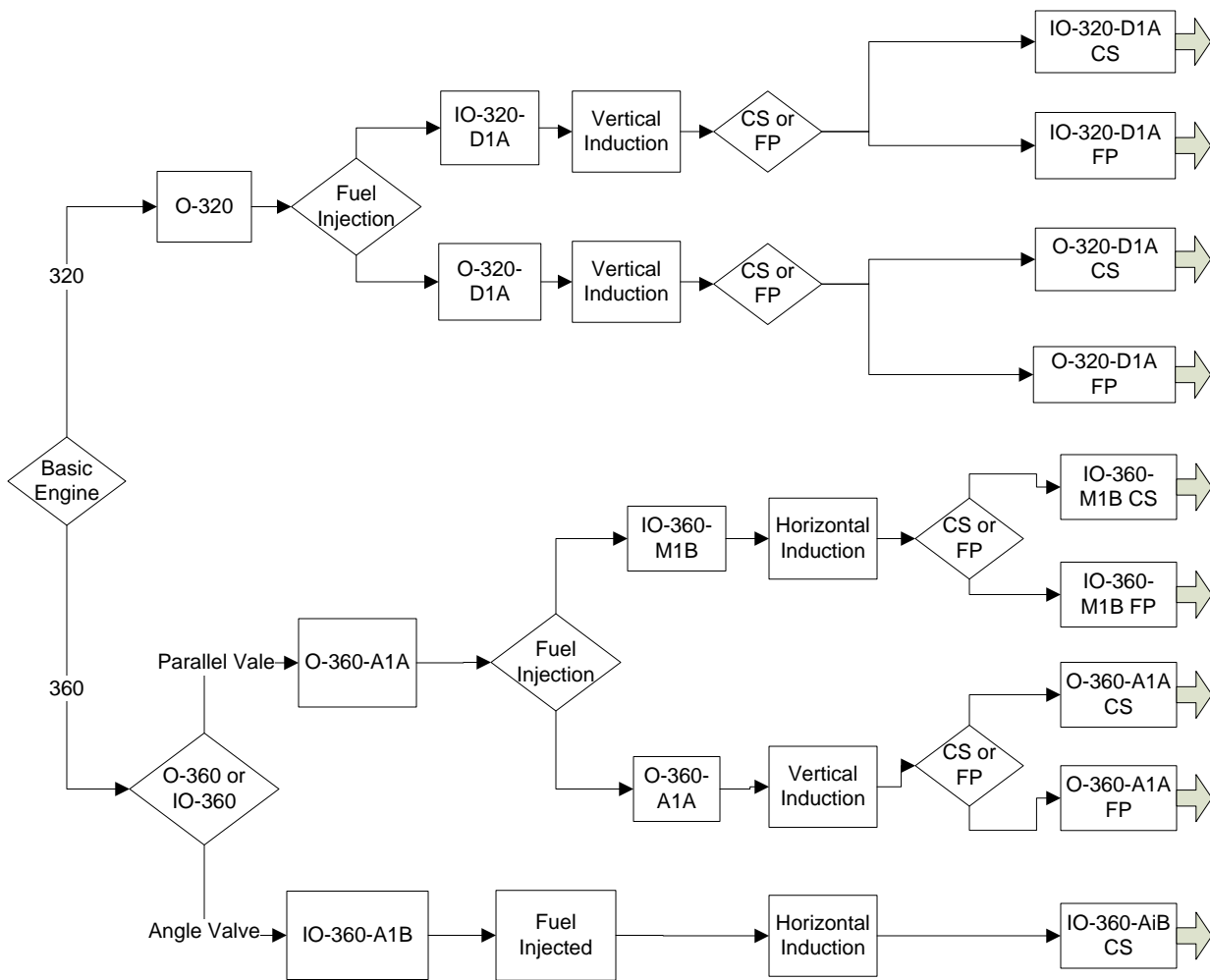


This is a basic engine decision tree which terminates into firewall-forward kit selection, based on engine type, fuel injection, induction, and prop type.



Engine/ Aircraft Cross-Ref with Van's Firewall Forward Kit Numbers

RV-7	RV-7A	RV-8	RV-8A	RV-9	RV-9A
				FF-9/9A IO-320 CS	FF-9/9A IO-320 CS
				FF-9/9A IO-320 FP	FF-9/9A IO-320 FP
FF-7 O-320 CS	FF-7A O-320 CS	FF-8 O-320 CS	FF-8A O-320 CS	FF-9 O-320 CS	FF-9A O-320 CS
FF-7 O-320 FP	FF-7A O-320 FP	FF-8 O-320 FP	FF-8A O-320 FP	FF-9 O-320 FP	FF-9A O-320 FP
FF-7/7A IO-360M1B CS	FF-7/7A IO-360M1B CS	FF-8 IO-360M1B C/S	FF-8A IO-360M1B C/S		
FF-7 O-360 CS	FF-7A O-360 CS	FF-8 O-360 CS	FF-8A O-360 CS		
FF-7 O-360 FP	FF-7A O-360 FP	FF-8 O-360 CS	FF-8A O-360 CS		
FF-7/7A IO-360 200 CS	FF-7/7A IO-360 200 CS	FF-8 IO-360 200 CS	FF-8A IO-360 200 CS		

NOTE: empty blocks represent specific configurations not referenced on Van's web store. Contact Van's for correct applications.